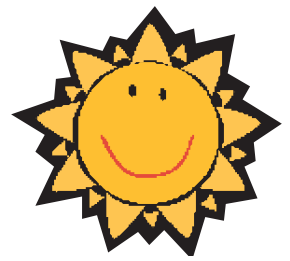


# Episcopal Day School

## Summer FUNdations 2008

### Registration



Child Name: \_\_\_\_\_ Grade for 2008-9 school year: \_\_\_\_\_

Parent(s) Name: \_\_\_\_\_

Address: \_\_\_\_\_ City/State/ZIP: \_\_\_\_\_

Phone: \_\_\_\_\_ Email: \_\_\_\_\_ Emergency Phone: \_\_\_\_\_

Health Issues (allergies, etc.): \_\_\_\_\_

T-shirt size (youth sizes):  XS  S  M  L  XL or  Adult S  Adult M

**PRESCHOOL PROGRAMS**

9 a.m. - 1 p.m., \$110.00 per week if registration and payment in full are received on or before May 16th or \$125.00 per week after May 16th.

**June 23 - 27**

\_\_\_\_\_ Trip to Treasure Island  
*Rising PK and K*

**July 7 - 11**

\_\_\_\_\_ Brown Bear, Brown Bear, What do you See?  
*Rising 3s, PK, and K*

**July 14 - 18**

\_\_\_\_\_ Cooking Up Some Fun  
*Rising 3s, PK, and K*

**July 21 - 25**

\_\_\_\_\_ Fun with Fish  
*Rising 3s and PK*

**July 28 - August 1**

\_\_\_\_\_ Kick Start Kindergarten  
*Rising K*

**July 28 - August 1**

\_\_\_\_\_ Shake, Rattle, and Roll  
*Rising 3s, PK, and K*

**LOWER SCHOOL PROGRAMS**

Rising 1st - rising 5th, 9 a.m. - 1 p.m. \$150.00 per week if registration and payment in full are received on or before May 16th or \$175.00 per week after May 16th.

**June 23-27**

\_\_\_\_\_ *Art, Bodies in Motion, Computers - Multimedia Me!*

**July 7 - 11**

\_\_\_\_\_ *Art, Sports Extravaganza, Chinese*

**July 21 - 25**

\_\_\_\_\_ *Art, Wide World of Sports, Water World-*

**July 28 - August 1**

\_\_\_\_\_ *Art, Inspirational Athletes, Going Green!*

**SPECIALTY / SPORTS PROGRAMS**

\$85.00 per week if registration and payment in full are received on or before May 16th or \$100.00 per week after May 16th.

**June 23-27**

\_\_\_\_\_ Boys and Girls Basketball  
*Rising 1st - 5th, 1:00 p.m. - 4:00 p.m.*

**July 14 - 18**

\_\_\_\_\_ Girls and Boys Soccer  
*Rising 2nd - 5th, 9:00 a.m. - 12:00 p.m.*

**July 21 - 25**

\_\_\_\_\_ Musical Theatre Camp  
*Rising 2nd - 8th, 9:00 a.m. - 12:00 p.m.*

**July 28 - August 1**

\_\_\_\_\_ Jump Start  
*Rising 1st grade only, 9:00 a.m. - 11:00 a.m.*

**July 28 - August 1**

\_\_\_\_\_ Girls Cheerleading  
*Rising 1st - 6th, 1:00 p.m. - 4:00 p.m.*

**Total preschool programs** \_\_\_\_\_ **Total lower school programs** \_\_\_\_\_ **Total specialty programs** \_\_\_\_\_

Amount enclosed \$ \_\_\_\_\_ Check # \_\_\_\_\_

Please return this completed form with payment to:  
Summer Programs, Episcopal Day School, 2248 Walton Way, Augusta GA 30904

*A cancellation fee of \$25 per camp will apply once registration is received.*